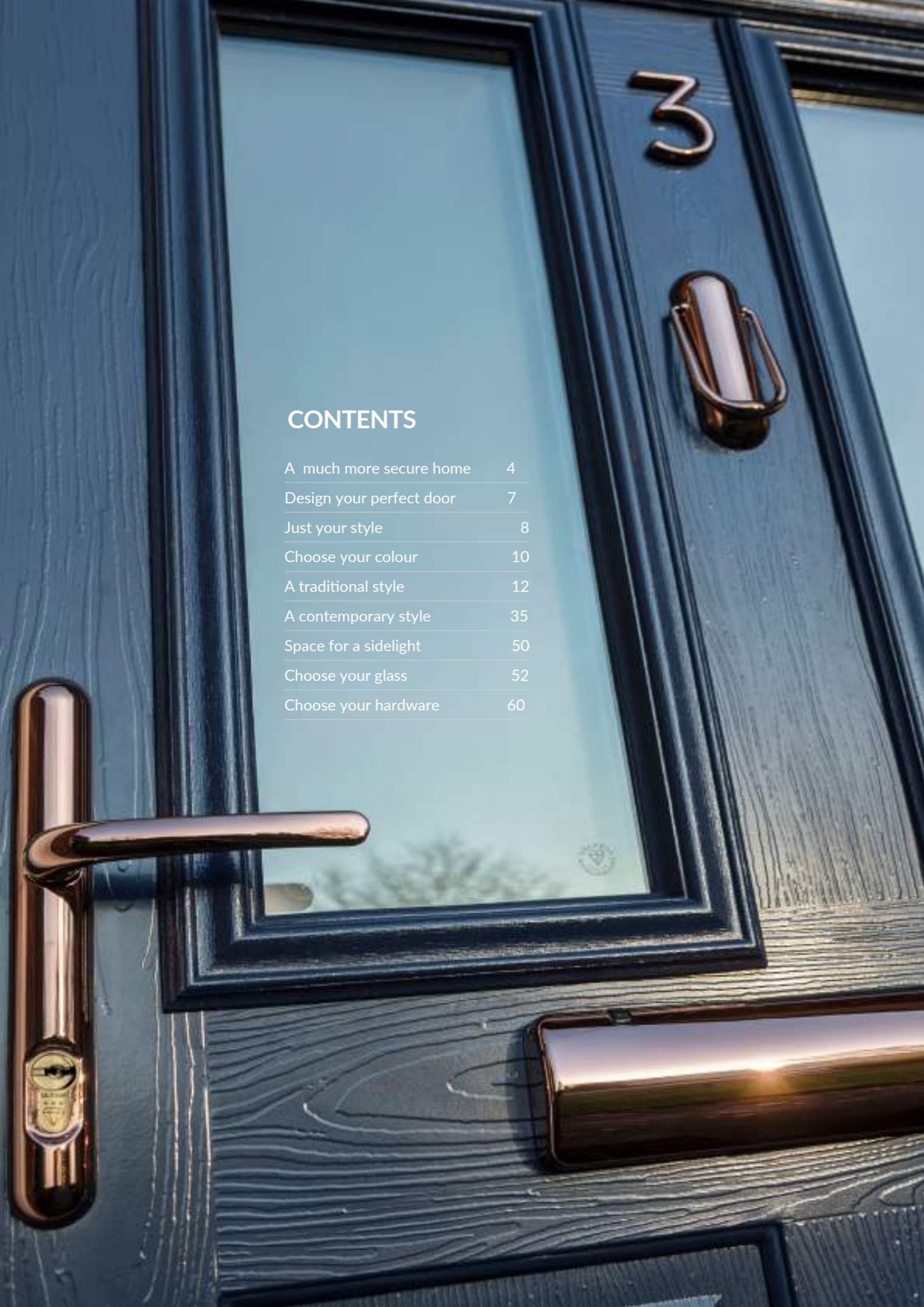


Welcome Home

Traditional and Contemporary doors





CONTENTS

A much more secure home	4
Design your perfect door	7
Just your style	8
Choose your colour	10
A traditional style	12
A contemporary style	35
Space for a sidelight	50
Choose your glass	52
Choose your hardware	60

A stunning and secure entrance for your home



If you are looking to transform your property our range of composite doors are the ideal choice. With a great range of traditional and contemporary styles, colours, furniture and glass, you can design the perfect focal point for your home.

Your door will look stunning for years to come, manufactured from a tough GRP surface in either a woodgrain finish to replicate timber or a smooth/etched finish to replicate aluminium. The inner core is manufactured from high density polyurethane foam, which offers exceptional thermal efficiency and will help to reduce energy bills.

The safety and security of your loved ones and belongings is a key factor in your purchase and you can be confident that, as standard, our doors are manufactured with leading hardware which will ensure your new door does just that.



This brochure is designed to give you ideas and inspiration in creating your new door. Hardware positioning and glass designs may vary depending upon technical specification and finished size of your manufactured door. Please be aware that your door may not look exactly like the door you have chosen in this brochure.

A much more secure home

Your front door is playing a big role in the protection of your belongings and loved ones. As standard our doors are manufactured with leading security and lock mechanisms to give you complete peace of mind.



Security of valued possessions and protecting loved ones are the main priority of any homeowner. Our composite doors have been designed to exceed even the most stringent of expectations. This is why we have incorporated a number of security features as standard.

- High performance multipoint locking system, set for smart technology. Your lock will be Kubu equipped, meaning you can easily transform your door to a smart door at any point.
- A neat and unobtrusive 2D-C hinge available in a range of colours for your door. With the unique patented lateral adjustment of +/- 3mm, it has a high load carrying capacity of 40kg, preventing the door from dropping.
- Ultion Diamond Secure Cylinder Lock supplied on all doors.

Optional Upgrades for your door

AV3 available with normal and heritage lock

Upgrade to an automatic locking door, this lock negates the need for a lever/lever door handle. You just pull or push the door closed with the bar handle and it automatically throws the hooks and dead bolt, making your home secure. When leaving your home or going to bed just simply turn the key to deadlock everything into position.

Ultion Smart

An innovative new lock to transform your door to a smart door, which can be locked with your smartphone or watch.

Secured by Design

For the ultimate in security, simply specify Secured by Design (SBD) to upgrade your door to this coveted standard.

Please note Kubu and SBD are not available with AV3.

COMPLETE PEACE OF MIND

For enhanced security and extra peace of mind, the coveted police-led Secured by Design standard can be easily achieved across our range of composite doors with a few minor upgrades.

Specifying 'Secured by Design' on your order ensures your door will be manufactured by our fabricator Glazerite UK Group Ltd to the ultimate security specification for complete peace of mind and protection of your home.



ACTIVATE YOUR KUBU SMART LOCK

Your new door will be Kubu equipped. All you have to do is visit kubu-home.com to purchase your Kubu Starter Kit, install the app and you have a smart door.

Kubu uses smart and simple technology to monitor your lock in real time. You will be able to check the status of your door no matter where you are from the Kubu app on your phone.

The Kubu starter kit comes with one home hub, one door module, a plug and batteries. You can simply add more doors to your hub and app by purchasing additional door modules.

Setting up your new smart door couldn't be easier:

1. Download the Kubu App onto your phone.
2. Plug in your Home Hub. The Home Hub is a wifi bridge that connects to your door module and activates it.
3. Insert the Door Module into your door lock.

Then start enjoying the benefits.

Visit kubu-home.com for more information.



ULTION BECAUSE IT STAYS LOCKED

Millions of doors in the UK can be opened quietly in under 10 seconds with normal tools. Even the most secure multi-point hook mechanisms are disabled when the cylinder lock is snapped.

Still protects when the key is inside the lock

Something many of us are guilty of is leaving the key in the lock on the inside. Even with the most snap secure locks, leaving the key in the lock can completely remove any snap protection you thought you had. But not with the Ultion!

Attack forces lockdown mode

The moment that Ultion detects forced entry it activates an attack lock directly into the central cam - this is 'Lockdown Mode'. Even if the most determined intruder gets past Ultion's two sacrificial sections they won't get to attack lock because it is protected deep inside a solid molybdenum core and secured with a dedicated retaining pin. When Ultion is in lockdown mode your home and family are safe.

This is why we have chosen to incorporate the Ultion Diamond secure lock with all of our composite doors. When the Ultion detects attack a hidden lock automatically engages. Even in lockdown mode it stops the intruder from opening your door. Even after the failed attempt, your door can still be opened and locked from the inside.



The Ultion has been rigorously tested, nothing has beaten it.

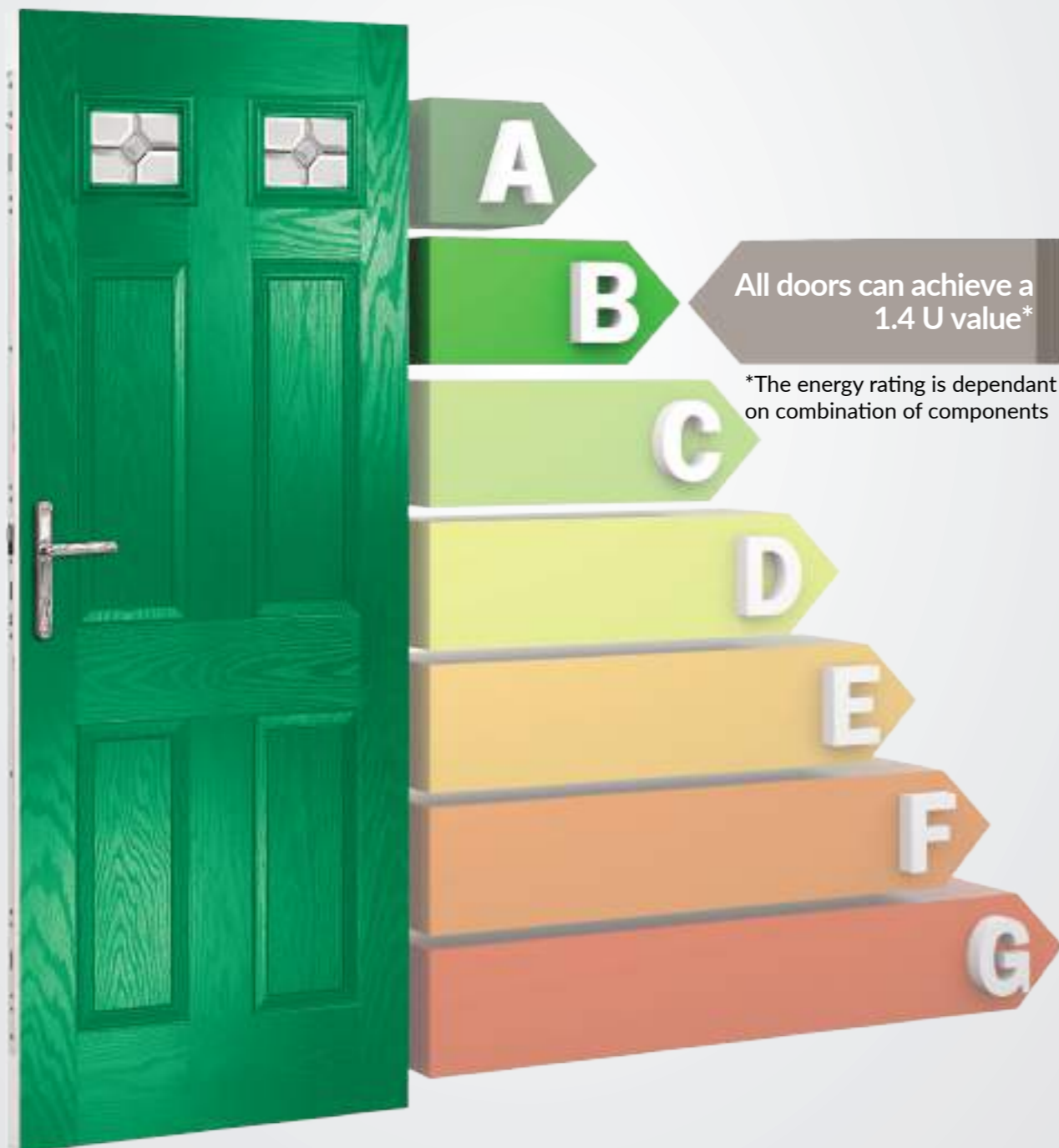
For more information on Ultion and the benefits visit: www.ultion-lock.co.uk

THERMAL PERFORMANCE

Composite doors are much more thermally efficient than either timber or PVC, and our doors are manufactured to the highest quality standards, making them more thermally efficient by design.

The warm foam core allows the door to have a significantly better 'U' value than any other option on the market and our entire range meets with the requirements of the current Building Regulations.

There are various upgrades to glass options which increase the thermal performance of the door. The combination should keep your home warmer and could help reduce your energy bills.



YOUR STYLE AND COLOUR

The first decisions in designing your new front door are deciding on the style and colour.

We have a great range of traditional and contemporary door styles in a wide range of colours or colour match to any RAL.

Supplied in a VEKA or Halo sculptured or bevelled outerframe.

YOUR GLAZING OPTIONS

The glass you choose is as important as the door style and colour.

With a wide range of options available in contemporary and traditional styles you'll be able to create the perfect focal point for your home.

YOUR HARDWARE OPTIONS

The hardware you choose gives your door its own individual look.

Our hardware is high quality, assuring long term performance and security of your home. Your hardware choices can make a real statement.

Just your style

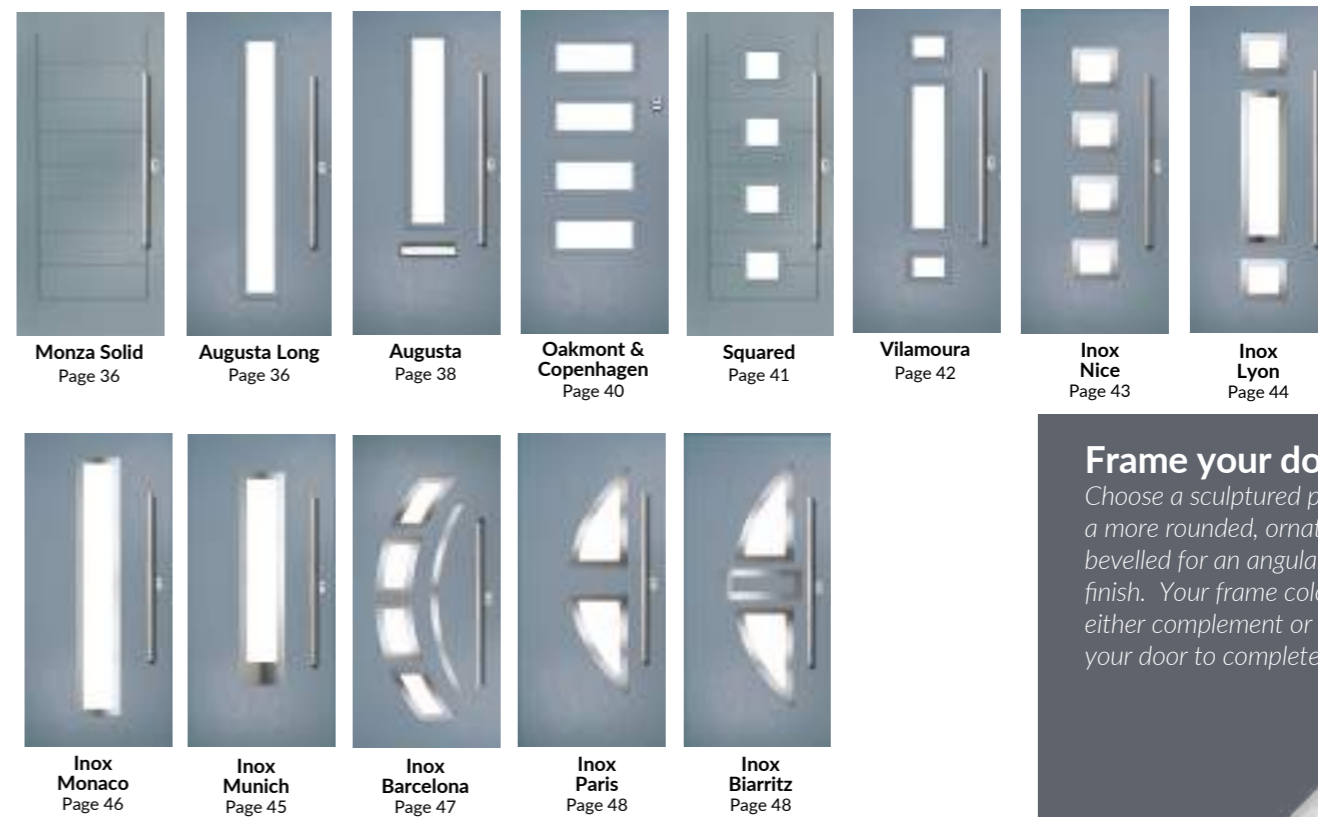
TRADITIONAL

Our traditional door styles are designed to replicate the most popular timber doors with a realistic woodgrain embossing in the surface. Whether you are enhancing the entrance to a period home, modern townhouse or a cottage, there is a style to suit the property and your taste.



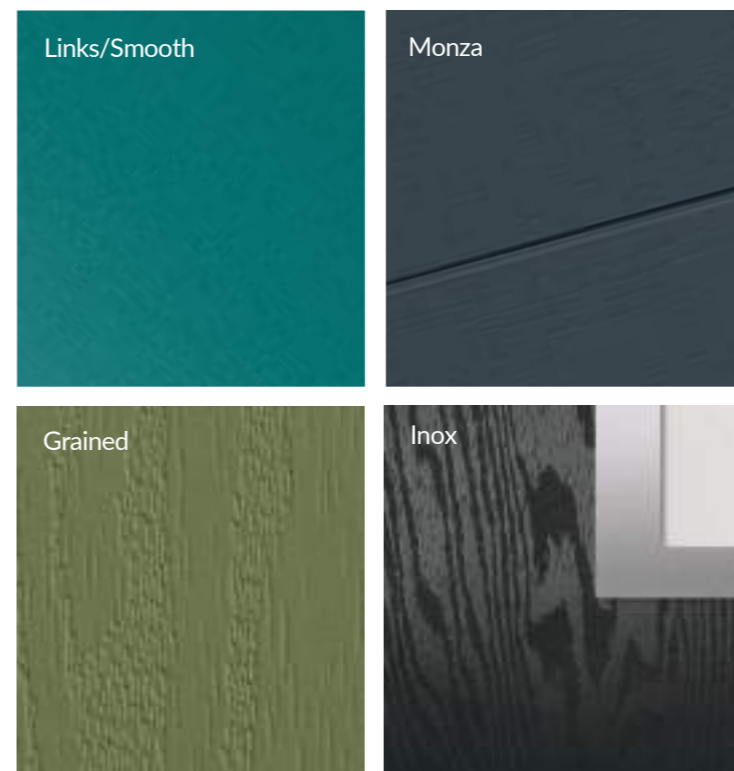
CONTEMPORARY

A selection of modern door designs with unique cassettes and glazing options to create your perfect door.



A contemporary finish

A number of our contemporary designs have a range of finishes to choose from including Monza, Links smooth, woodgrain or Inox smooth with steel cassettes.



Frame your door

Choose a sculptured profile for a more rounded, ornate style or bevelled for an angular modern finish. Your frame colour can either complement or contrast your door to complete the look.

Sculptured Profile

Bevelled Profile

Choose your colour

Standard Colours

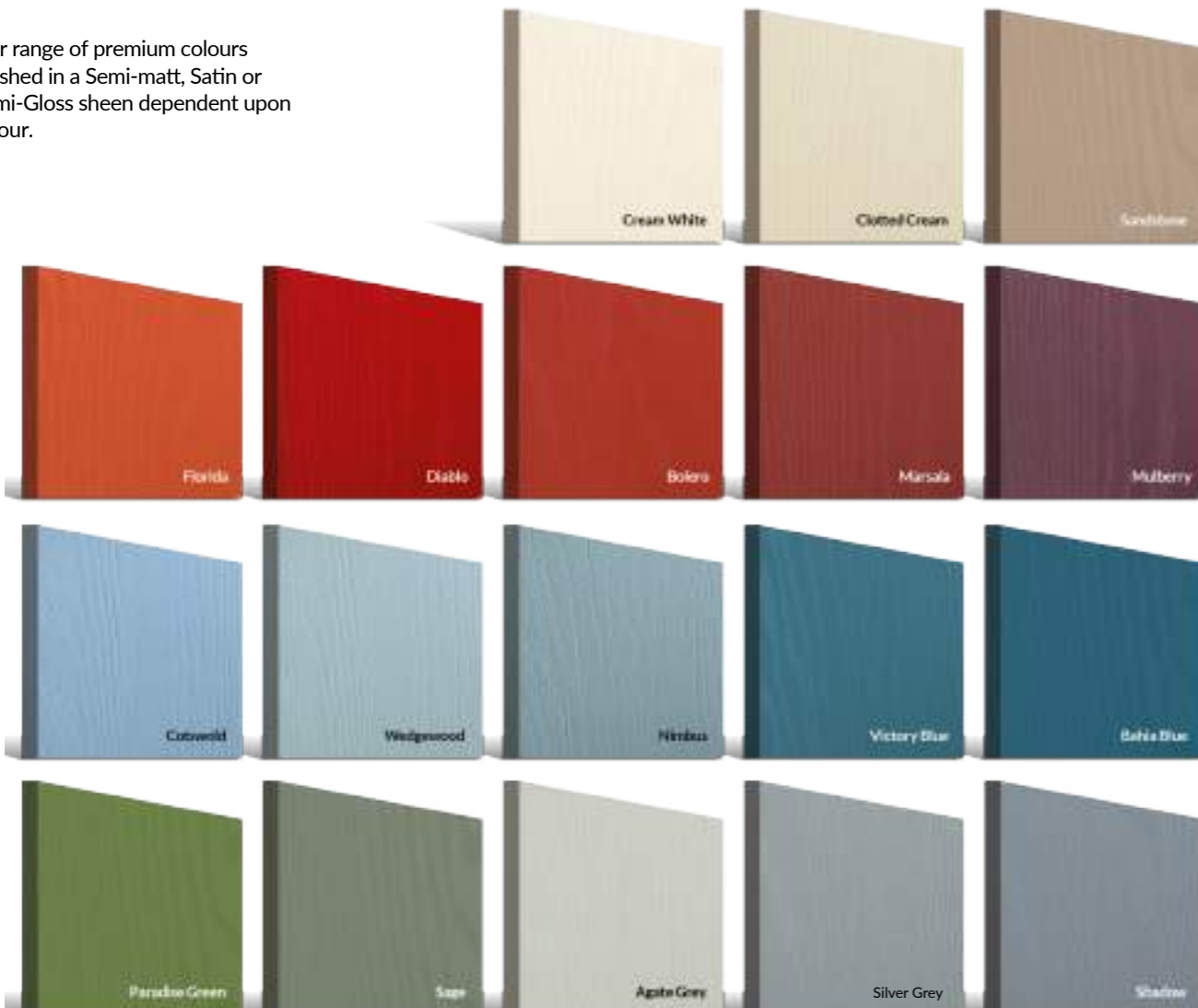
Our popular standard colours are generally available on shorter lead times.

Manufactured with a white interior is standard, although you can choose a colour on both sides. Please note not all door styles are available in the full colour range.



Premium Colours

Our range of premium colours finished in a Semi-matt, Satin or Semi-Gloss sheen dependent upon colour.

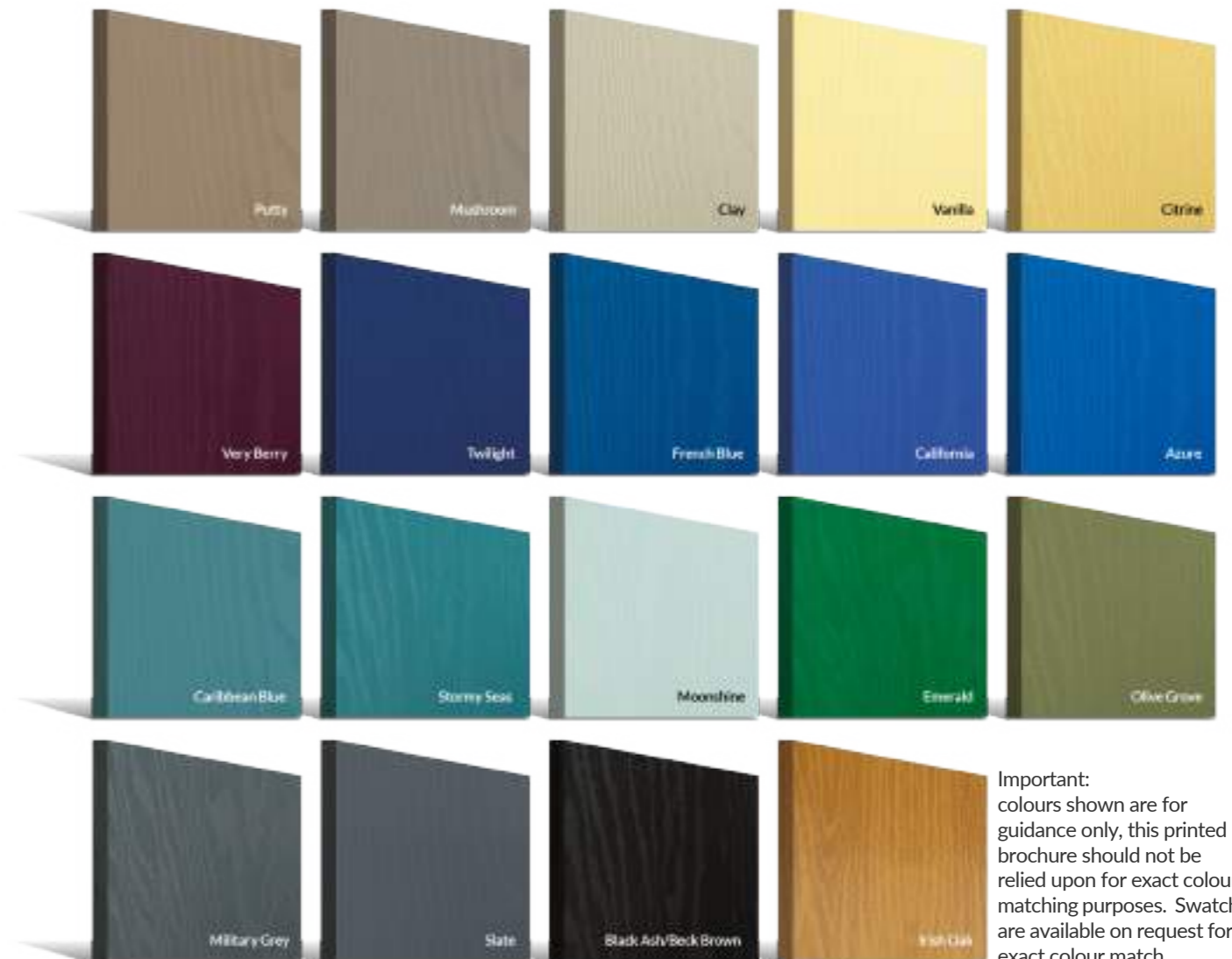
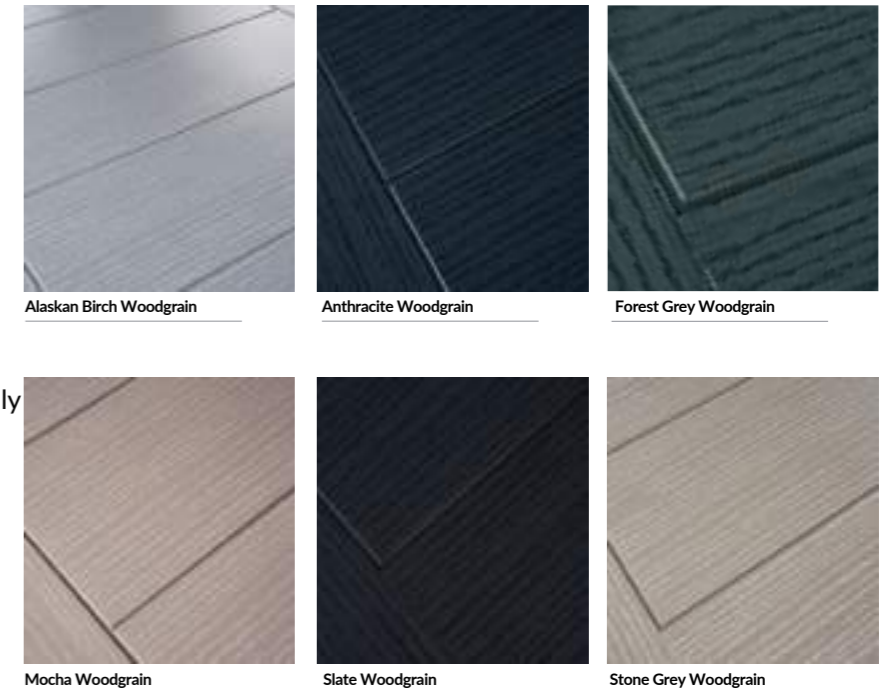


In addition to the standard and premium range of colours you can choose a specific RAL for your door.

Patina Colours

Exclusively available for Monza designs.

Only available on the Monza range, offering more choice for your designer door. With these stained handcrafted finishes, each base colour has a carefully selected complementary Patina stain designed specifically to enhance the Monza's contemporary detailing.



Important: colours shown are for guidance only, this printed brochure should not be relied upon for exact colour matching purposes. Swatches are available on request for an exact colour match.

Please note: open out doors will show a white edge-band if interior colour is white.

Marquise

WOODGRAIN TRADITIONAL

Our most popular composite door option, available in a choice of three glazing styles.



Door Colour: Wedgewood | Decorative Glass: Kew



Marquise



Marquise 2-2



Marquise 2-3



Door Colour: Slate
Decorative Glass: Birchwood



Door Colour: Stormy Seas
Decorative Glass: Louisiana



Door Colour: Bolero
Decorative Glass: Diamonte



Door Colour: Clay
Decorative Glass: Mercury



Door Colour: Very Berry
Decorative Glass: Belgravia



Door Colour: Cotswold
Decorative Glass: Astoria



Please note: hardware, glass and colour combinations/placements shown are for visual purposes only. Final manufactured door may vary from those shown.

Craftsman

WOODGRAIN TRADITIONAL

Reminiscent of the door styles of the 1930's, the Craftsman is available as a solid door or with a glazed option.



Craftsman 1

Craftsman Solid

Door Colour: Mushroom | Decorative Glass: Essence



Door Colour: Irish Oak
Decorative Glass: Impression



Door Colour: Wedgewood
Decorative Glass: Kew



Door Colour: Twilight
Decorative Glass: Panama



Door Colour: Victory Blue
Decorative Glass: Tranquility Zinc



Door Colour: Clay
Decorative Glass: Hathaway



Door Colour: Shadow
Decorative Glass: Tiffany



Please note: hardware, glass and colour combinations/placements shown are for visual purposes only. Final manufactured door may vary from those shown.

Crown

WOODGRAIN TRADITIONAL

A traditional favourite with just a hint of modern, the Crown is also available in a number of glazing options as shown below.



Door Colour: Paradise Green | Decorative Glass: Hathaway



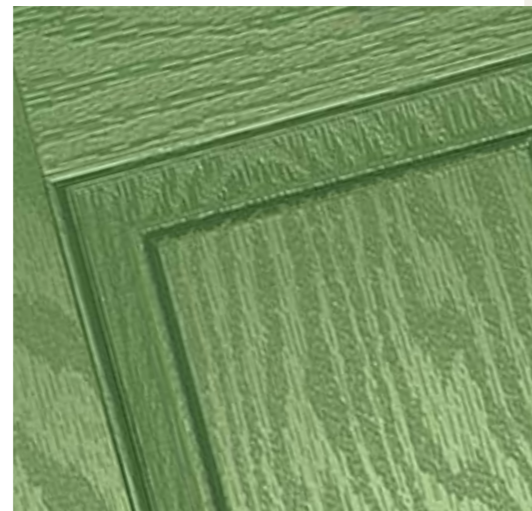
Crown 3



Crown 1



Crown 5



Door Colour: Nimbus
Decorative Glass: Prestige



Door Colour: Clotted Cream
Decorative Glass: Stardrop



Door Colour: French Blue
Decorative Glass: Bloomsbury



Door Colour: Mulberry
Decorative Glass: Impression



Door Colour: Victory Blue
Decorative Glass: Birchwood



Door Colour: Military Grey
Decorative Glass: Numbers*



Please note: hardware, glass and colour combinations/placements shown are for visual purposes only. Final manufactured door may vary from those shown.

Radiant

WOODGRAIN TRADITIONAL

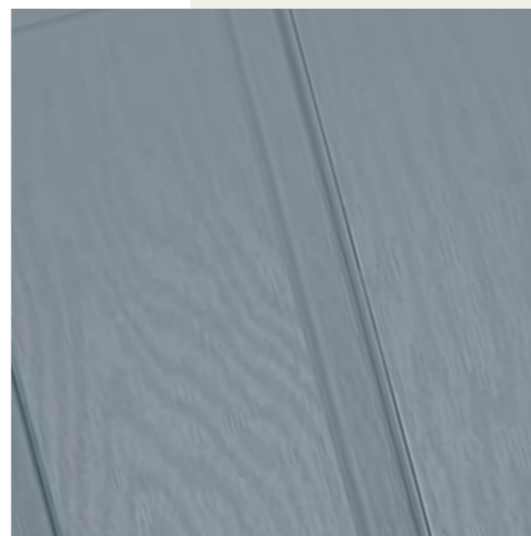
The traditional six-panel door available with two or four glazing details.



Door Colour: Shadow | Decorative Glass: Metropolis

Radiant 4

Radiant 2



Door Colour: White
Decorative Glass: Belgravia

Radiant 2 Design



Door Colour: Cotswold
Decorative Glass: Hathaway



Door Colour: Bolero
Decorative Glass: Bloomsbury



Door Colour: Anthracite Grey
Decorative Glass: Milan



Door Colour: Stormy Seas
Decorative Glass: Louisiana



Door Colour: Very Berry
Decorative Glass: Prestige



Please note: hardware, glass and colour combinations/placements shown are for visual purposes only. Final manufactured door may vary from those shown.

Trillion

WOODGRAIN TRADITIONAL

The large glazed area of the Trillion can also be enhanced with the GridLite option.



Door Colour: **Nimbus**
Decorative Glass: **Bloomsbury**



Door Colour: **Sage**
Decorative Glass: **Tranquility Zinc**



Door Colour: **Clotted Cream**
Decorative Glass: **Victorian Border**



Door Colour: **Agate Grey**
Decorative Glass: **Renaissance Black**



Door Colour: **Silver Grey**
Decorative Glass: **Aztec**



Door Colour: **Wedgewood**
Decorative Glass: **Optimal**

11 Grid Design



Please note: hardware, glass and colour combinations/placements shown are for visual purposes only. Final manufactured door may vary from those shown.

Princess

WOODGRAIN TRADITIONAL

With its large glazed area, the Princess lets light flood through. Also available with with 4 or 9 grid option.



Princess

Princess 4 Grid

Door Colour: Moonshine | Decorative Glass: Optimal



Princess 9 Grid

Door Colour: Green
Decorative Glass: Impression



Door Colour: Dusky Pink
Decorative Glass: Bold Pink



Door Colour: Citrine
Decorative Glass: Artemis



Door Colour: Clay
Decorative Glass: Optimal

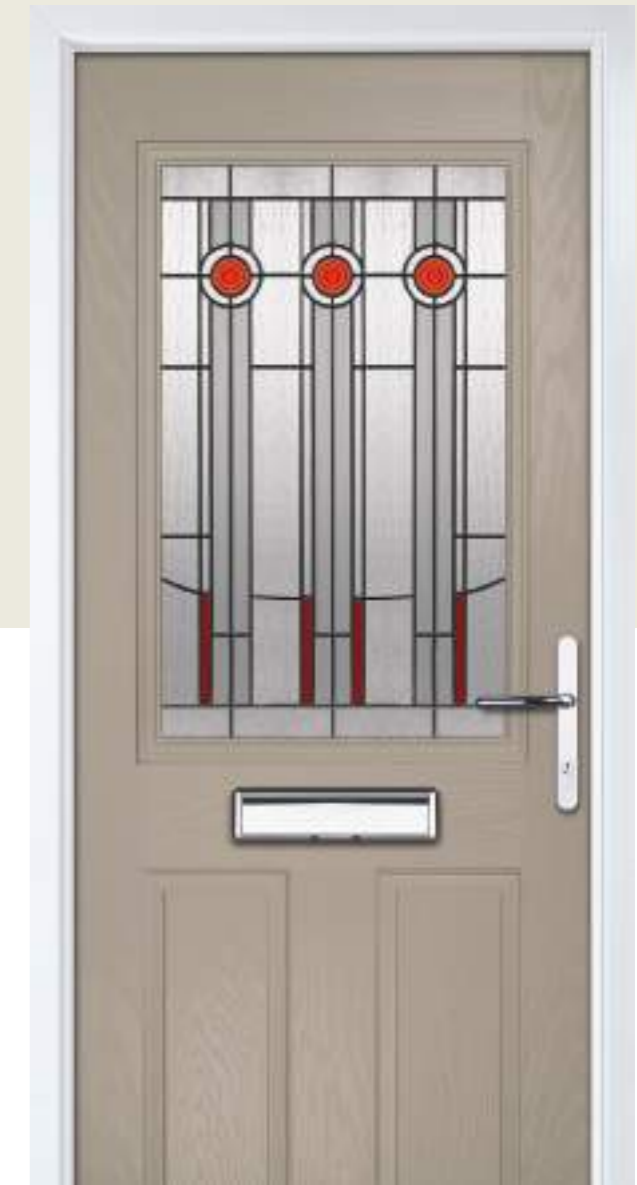
9 Grid Design



Door Colour: Black
Decorative Glass: Louisiana



Door Colour: Mushroom
Decorative Glass: Metropolis



Please note: hardware, glass and colour combinations/placements shown are for visual purposes only. Final manufactured door may vary from those shown.

Gleneagles

WOODGRAIN TRADITIONAL

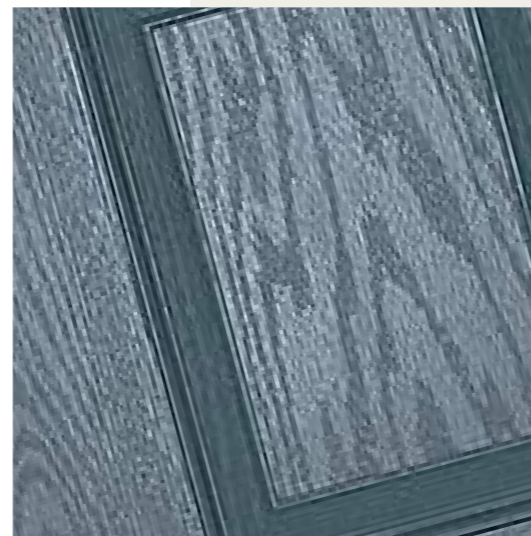
With its eloquent design the Gleneagles is proving to be a very popular design. Available as full glazed or grid option.



Door Colour: Slate | Decorative Glass: Lotus

Gleneagles

Gleneagles 4 Grid



Door Colour: Black
Decorative Glass: Louisiana



Door Colour: Twilight
Decorative Glass: Impression



Door Colour: Silver Grey
Decorative Glass: Synergy



Door Colour: Moonshine
Decorative Glass: Indulgence Grey

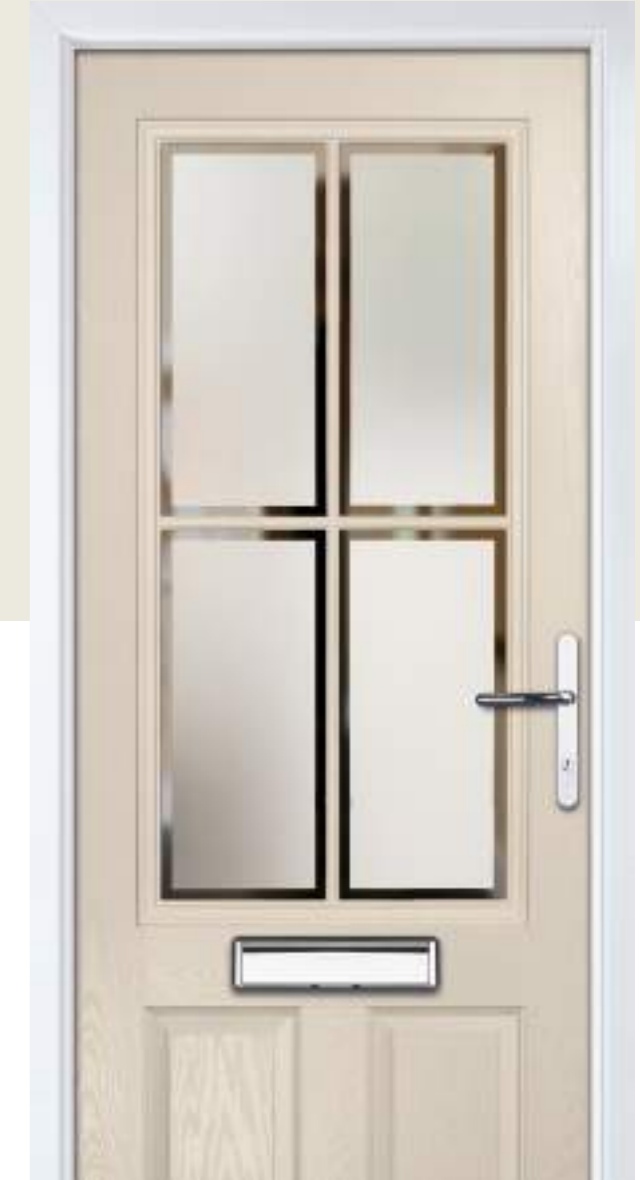


Door Colour: Nimbus
Decorative Glass: Graphite



Door Colour: Clotted Cream
Decorative Glass: Optimal

4 Grid Design



Please note: hardware, glass and colour combinations/placements shown are for visual purposes only. Final manufactured door may vary from those shown.

Solitaire 1-2 & 3

WOODGRAIN TRADITIONAL

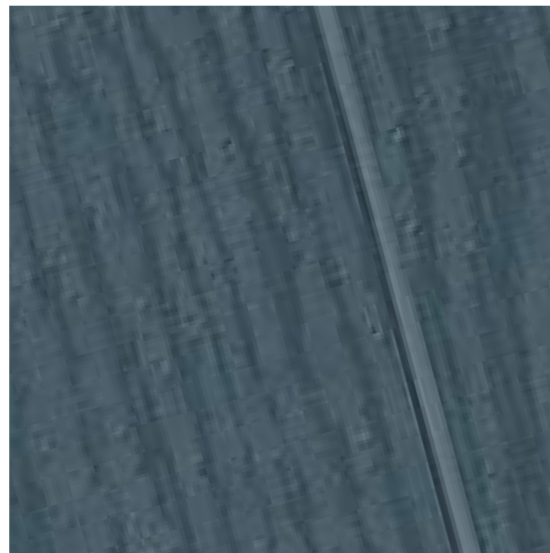
Our traditional style farmhouse cottage doors with a larger glass design.



Door Colour: Slate | Decorative Glass: Graphite

Solitaire 1-2

Solitaire 3



Solitaire 0

Door Colour: Clotted Cream
Decorative Glass: Milan



Door Colour: Florida
Decorative Glass: Trio Diamond



Door Style: Solitaire 3
Door Colour: Blue
Decorative Glass: Metropolis



Door Colour: Stormy Seas
Decorative Glass: Artemis



Door Colour: Treasure Seeker
Decorative Glass: Hive



Door Style: Solitaire 3
Door Colour: Bright Pink
Decorative Glass: Kew



Please note: hardware, glass and colour combinations/placements shown are for visual purposes only. Final manufactured door may vary from those shown.

Solitaire 1, 6 & DT3

WOODGRAIN TRADITIONAL

A choice of three glazing options to create the perfect traditional entrance.



Door Colour: Chartwell Green | Decorative Glass: Cubic



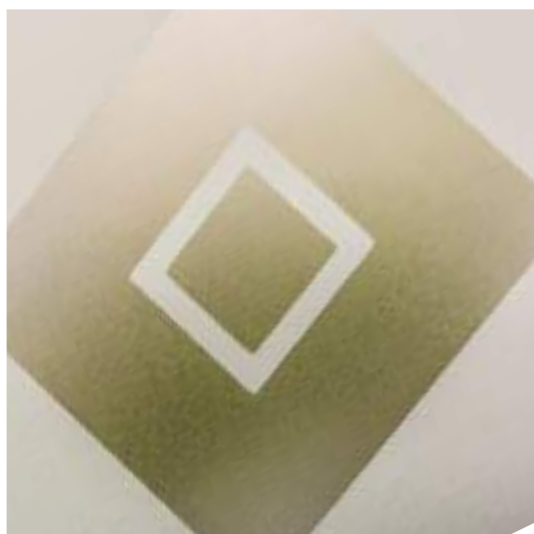
Solitaire 6



Solitaire DT3



Solitaire 1



Door Style: Solitaire 6
Door Colour: Pale Pink
Decorative Glass: Artemis

FLIP
Flat Grain



Door Style: Solitaire DT3
Door Colour: Sage
Decorative Glass: Dorchester

FLIP
Flat Grain



Door Style: Solitaire 6
Door Colour: Slate
Decorative Glass: Grange

FLIP
Flat Grain



Door Style: Solitaire DT3
Door Colour: Clotted Cream
Decorative Glass: Tranquility

FLIP
Standard



Door Style: Solitaire 1
Door Colour: Clay
Decorative Glass: Graphite

FLIP
Flat Grain



Door Style: Solitaire DT3
Door Colour: Wedgewood
Decorative Glass: Louisiana

FLIP
Standard



Please note: hardware, glass and colour combinations/placements shown are for visual purposes only. Final manufactured door may vary from those shown.

Solitaire 5 & 7

WOODGRAIN TRADITIONAL

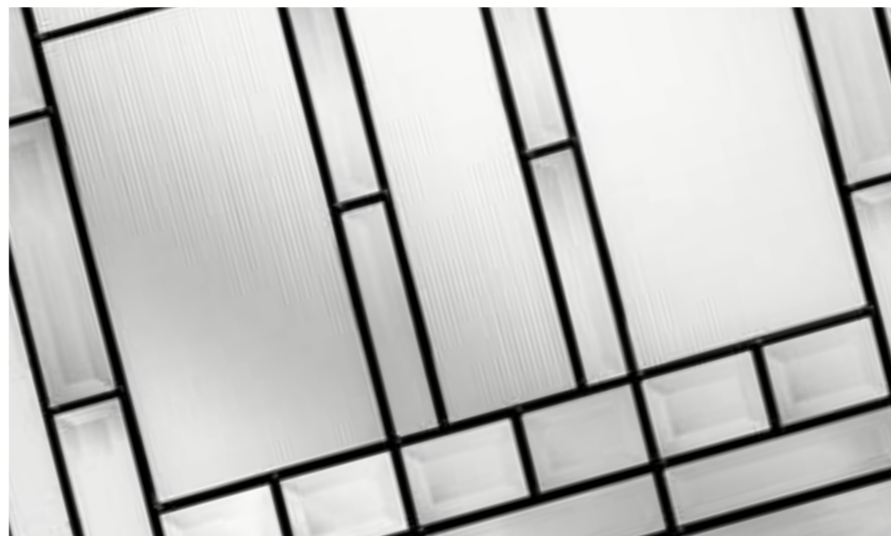
A traditional style cottage door, that lets light flood in with the larger glazed area.



Door Style: Solitaire 5 | Door Colour: Shadow | Decorative Glass: Louisiana

Solitaire 5

Solitaire 7



Door Style: Solitaire 7
Door Colour: Black Ice
Decorative Glass: Milan



Door Style: Solitaire 5
Door Colour: Pale Pink
Decorative Glass: Bold Pink



Door Style: Solitaire 5
Door Colour: Sage
Decorative Glass: Athena



Door Style: Solitaire 7
Door Colour: Silver Grey
Decorative Glass: Mercury



Door Style: Solitaire 7
Door Colour: Bolero
Decorative Glass: Metropolis



Door Style: Solitaire 5
Door Colour: Wedge
Decorative Glass: Prairie



Please note: hardware, glass and colour combinations/placements shown are for visual purposes only. Final manufactured door may vary from those shown.

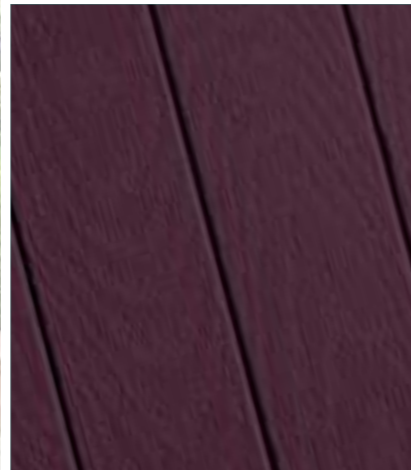
Solitaire 2

WOODGRAIN TRADITIONAL

On a traditional farmhouse design the facing curves of the glazing detail bring a modern statement to this door.



Door Colour: **Mulberry** | Decorative Glass: **Stardrop**



Door Style: **Solitaire 4**
Door Colour: **Clotted Cream**
Decorative Glass: **Impression**



Door Style: **Solitaire 10, Left**
Door Colour: **Bright Pink**
Decorative Glass: **Tectronic**



Door Style: **Solitaire 4**
Door Colour: **Anthracite**
Decorative Glass: **Louisiana**



Door Style: **Solitaire 10, Right**
Door Colour: **Golden Oak**
Decorative Glass: **Bloomsbury**



Solitaire 4 & 10

WOODGRAIN TRADITIONAL

A very popular choice combining the modern glazed areas with a traditional farmhouse look.

Door Colour: **Nimbus**
Decorative Glass: **Trio Diamond**



Door Colour: **Cream White**
Decorative Glass: **Hathaway**



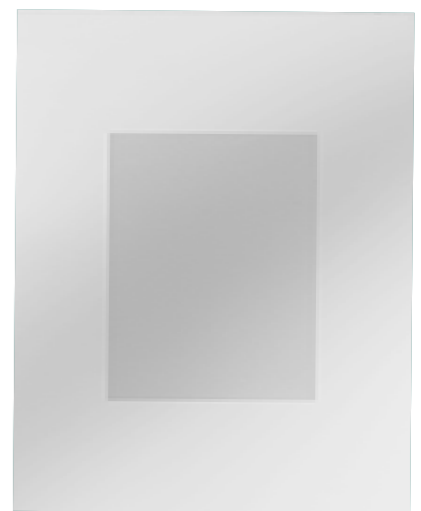
Door Colour: **Shadow**
Decorative Glass: **Impression**



Door Colour: **Caribbean Blue**
Decorative Glass: **Birchwood**



Door Colour: **Paradise Green** | Decorative Glass: **Cubic**



Merion

WOODGRAIN TRADITIONAL

A great choice for side and back doors the Merion is available with a glazed or 4 grid style option.



Door Colour: Mushroom | Decorative Glass: Optimal



Door Colour: Very Berry
Decorative Glass: 4 Bevel Square



Door Colour: Chartwell green
Decorative Glass: Artemis



Door Colour: Anthracite Grey
Decorative Glass: Louisiana



Door Colour: Bolero
Decorative Glass: Belgravia



A more contemporary look

MONZA

With its linear etched detailing on a woodgrain, glazed with a flat grained cassette, the Monza offers a stunning entrance that really makes a statement.



LINKS

Offering a simple smooth finish, glazed with a flat stipple cassette, Links offers that minimalist look for a modern and sleek entrance point.



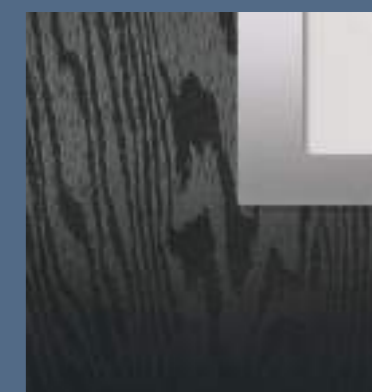
GRAINED

For that middle ground between traditional and contemporary, the woodgrain finish and flat grained cassette option will offer you the perfect balance.



INOX

The ultimate in modern aesthetics for your door with a woodgrain finish and glazed with the stunning Inox stainless steel cassette.



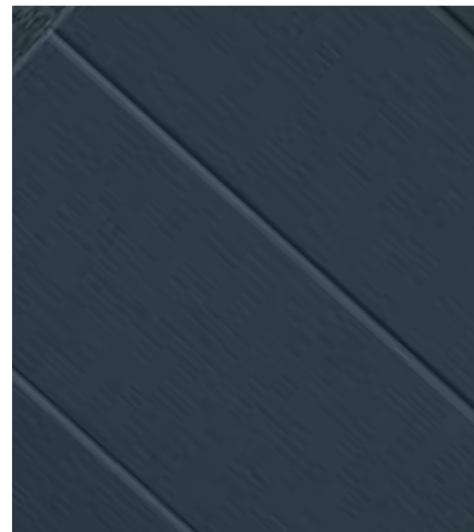
Augusta Long

CONTEMPORARY RANGE

Choose from our grained, smooth and Monza design with a long glazed panel, this is a stunning door. Alternatively choose the Monza Solid option for complete privacy.



Door Colour: Anthracite Grey | Decorative Glass: Luxor



Door Colour: Shadow
Decorative Glass: Tectronic

Centre
Links Option



Door Colour: French Blue
Decorative Glass: Graphite

Left
Monza Option



Door Colour: Slate
Decorative Glass: Trinity

Centre
Grained Option



Door Colour: Olive Grove
Decorative Glass: Trio Diamond

Centre
Grained Option



Door Colour: Stormy Seas
Decorative Glass: Athena

Left
Links Option



Door Colour: Anthracite
Decorative Glass: N/A

Monza Solid
Option



Please note: hardware, glass and colour combinations/placements shown are for visual purposes only. Final manufactured door may vary from those shown.

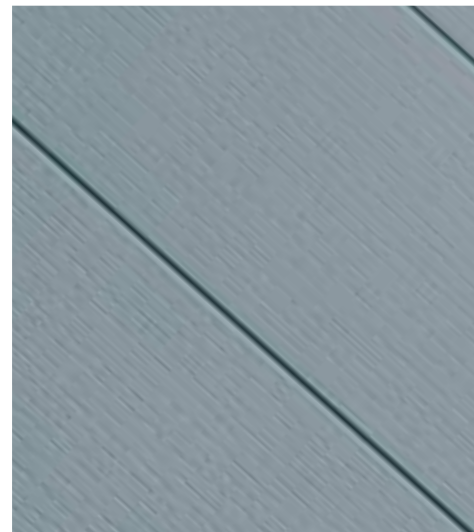
Augusta

CONTEMPORARY RANGE

Choose from our grained, smooth and Monza design with a long glazed panel, this is a stunning door.



Door Colour: Silver Grey | Decorative Glass: Quantum



Door Colour: Bolero
Decorative Glass: Luxor

Centre
Grained Option



Door Colour: Alaskan
Decorative Glass: Monza Etch Lines



Door Colour: Military Grey
Decorative Glass: Deco

Centre
Monza Option



Door Colour: Bahia
Decorative Glass: Lotus

Centre
Links Option



Door Colour: Mulberry
Decorative Glass: Quadratum

Left
Monza Option



Door Colour: Clotted Cream
Decorative Glass: Graphite

Centre
Grained Option



Please note: hardware, glass and colour combinations/placements shown are for visual purposes only. Final manufactured door may vary from those shown.

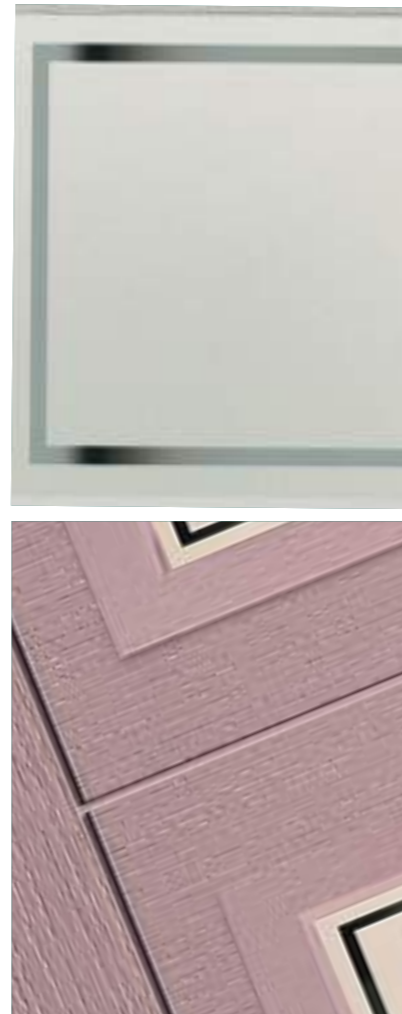
Oakmont/Copenhagen

CONTEMPORARY RANGE

Available in our Monza, grained or smooth links the Oakmont and Copenhagen are a great modern choice.



Door Style: Monza Oakmont | Door Colour: Dusky | Decorative Glass: Victorian border



Door Style: Monza Square
Door Colour: Nimbus
Decorative Glass: Trinity

Left Option



Door Style: Links Square
Door Colour: Stormy Seas
Decorative Glass: Graphite

Centre Option



Door Style: Grained Square
Door Colour: Agate
Decorative Glass: Satin

Centre Option



Door Style: Links Square
Door Colour: Anthracite Grey
Decorative Glass: Artemis

Centre Option



Squared

CONTEMPORARY RANGE

Our modern square door design is available in the Monza, grained or smooth links finish.

Door Style: Links Oakmont
Door Colour: Florida
Decorative Glass: Tectronic



Door Style: Monza Oakmont
Door Colour: Slate
Decorative Glass: Birchwood



Door Style: Grained Copenhagen
Door Colour: Sage
Decorative Glass: Skyline



Door Style: Links Oakmont
Door Colour: Olive Grove
Decorative Glass: Cubic



Door Style: Monza Square | Door Colour: Cotswold | Decorative Glass: Louisiana



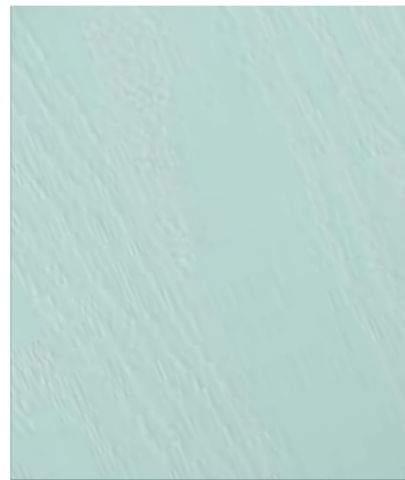
Vilamoura

CONTEMPORARY RANGE

The inline slim glazing details and grained finish of the Vilamoura offers a contemporary door.



Door Colour: Moonshine | Decorative Glass: Milan



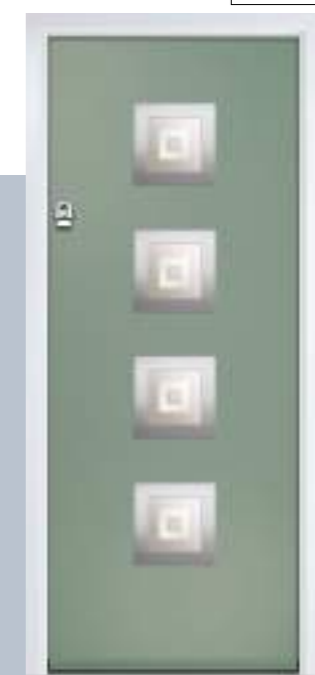
Door Colour: Mulberry
Decorative Glass: Skyline
Monza Option



Door Colour: Clay
Decorative Glass: Vector
Grained Option



Door Colour: Sage
Decorative Glass: Cubic
Links Option



Door Colour: Anthracite Grey
Decorative Glass: Artemis
Grained Option



Inox Nice

CONTEMPORARY RANGE

The Inox Nice door offers a Mediterranean style with four decorative lites that allow light to stream in.

Door Colour: Agate
Decorative Glass: Graphite



Door Colour: Anthracite
Decorative Glass: Louisiana



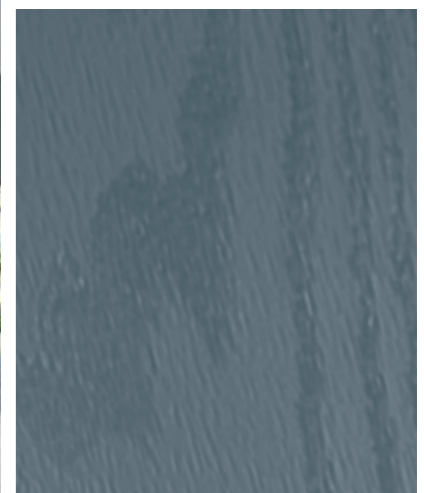
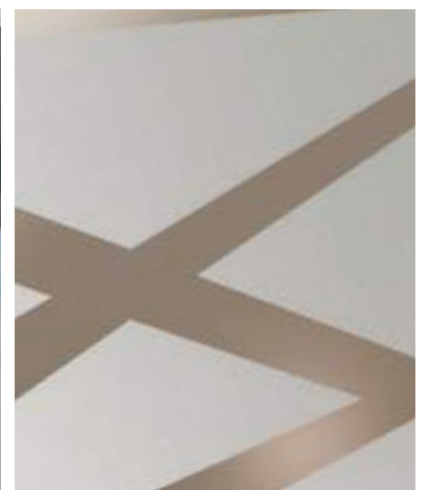
Door Colour: Black Ice
Decorative Glass: Metropolis



Door Colour: Emerald
Decorative Glass: Cubic



Door Colour: Slate | Decorative Glass: Trinity



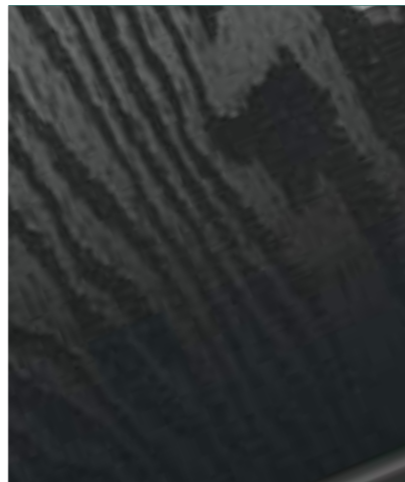
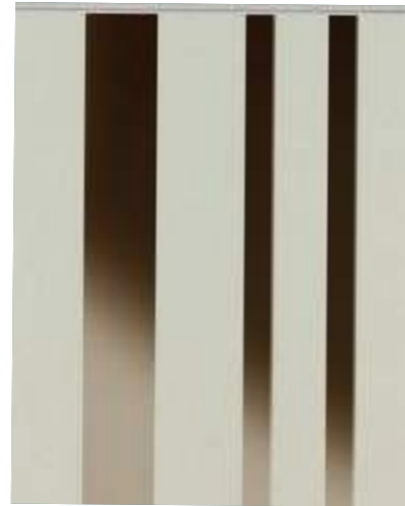
Inox Lyon

CONTEMPORARY RANGE

Inox Lyon provides a stunning mix of two smaller lites delicately 'bookending' a larger central lite to optimise light penetration.



Door Colour: Black | Decorative Glass: Skyline



Door Colour: Agate
Decorative Glass: Graphite

Grained Option

Door Colour: Anthracite
Decorative Glass: Synergy

Grained Option

Door Colour: Twilight
Decorative Glass: Satin

Grained Option

Door Colour: Black
Decorative Glass: Luxor

Links Option



Inox Munich

CONTEMPORARY RANGE

Inox Nice door offers a Mediterranean style with four decorative lites that allow light to stream in.



Door Colour: Clay | Decorative Glass: Aspen



Door Colour: Very Berry
Decorative Glass: Cubic

Grained Option

Door Colour: Moonshine
Decorative Glass: Graphite

Grained Option

Door Colour: Shadow
Decorative Glass: Trinity

Links Option

Door Colour: Nimbus
Decorative Glass: Rhapsody

Links Option



Inox Monaco

CONTEMPORARY RANGE

Inox Lyon provides a stunning mix of two smaller lites delicately 'bookending' a larger central lite to optimise light penetration.



Door Colour: Anthracite | Decorative Glass: Luxor



Door Colour: Black
Decorative Glass: Satin

Grained Option

Door Colour: Stormy Seas
Decorative Glass: Tokyo

Links Option

Door Colour: Anthracite
Decorative Glass: Satin

Links Option

Door Colour: Stormy Seas
Decorative Glass: Tokyo

Grained Option



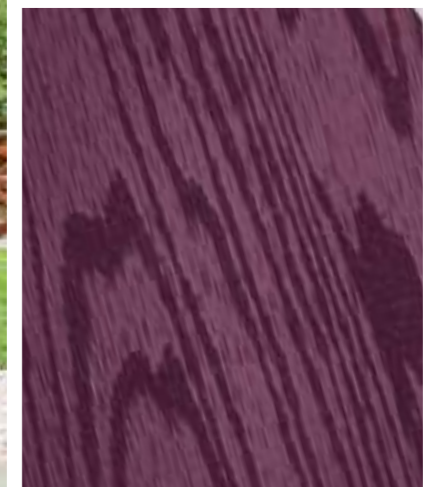
Inox Barcelona

CONTEMPORARY RANGE

The sweeping Barcelona design 'oozes' sophistication and is a popular option. Also available with curve panel detail.



Door Colour: Very Berry | Decorative Glass: Halo



Door Colour: Anthracite
Decorative Glass: Cubic

Monza Option

Door Colour: Victory Blue
Decorative Glass: Graphite

Grained Option

Door Colour: Military Grey
Decorative Glass: Satin

Links Option

Door Colour: Irish Oak
Decorative Glass: Satin

Monza Option



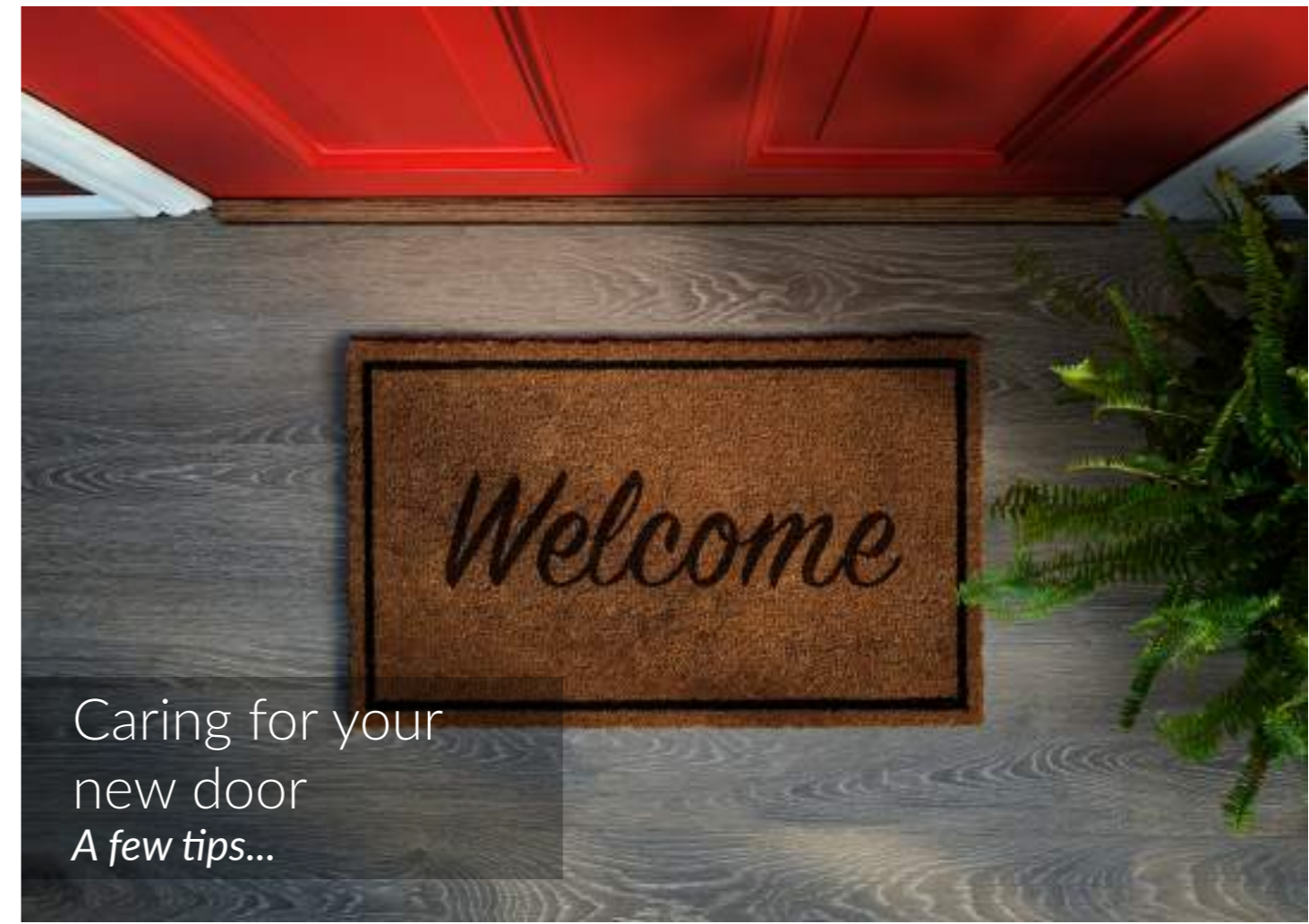
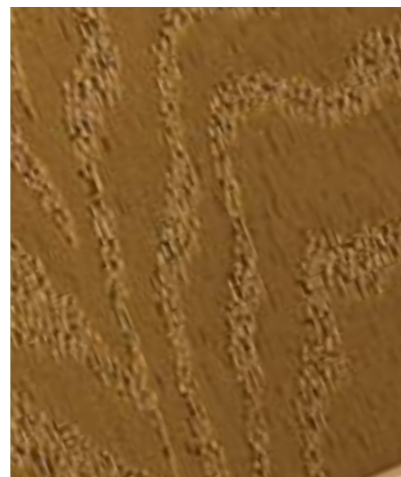
Inox Paris/Biarritz

CONTEMPORARY RANGE

The Inox Paris door delivers flair and grace. Make a real statement with the Biarritz option.



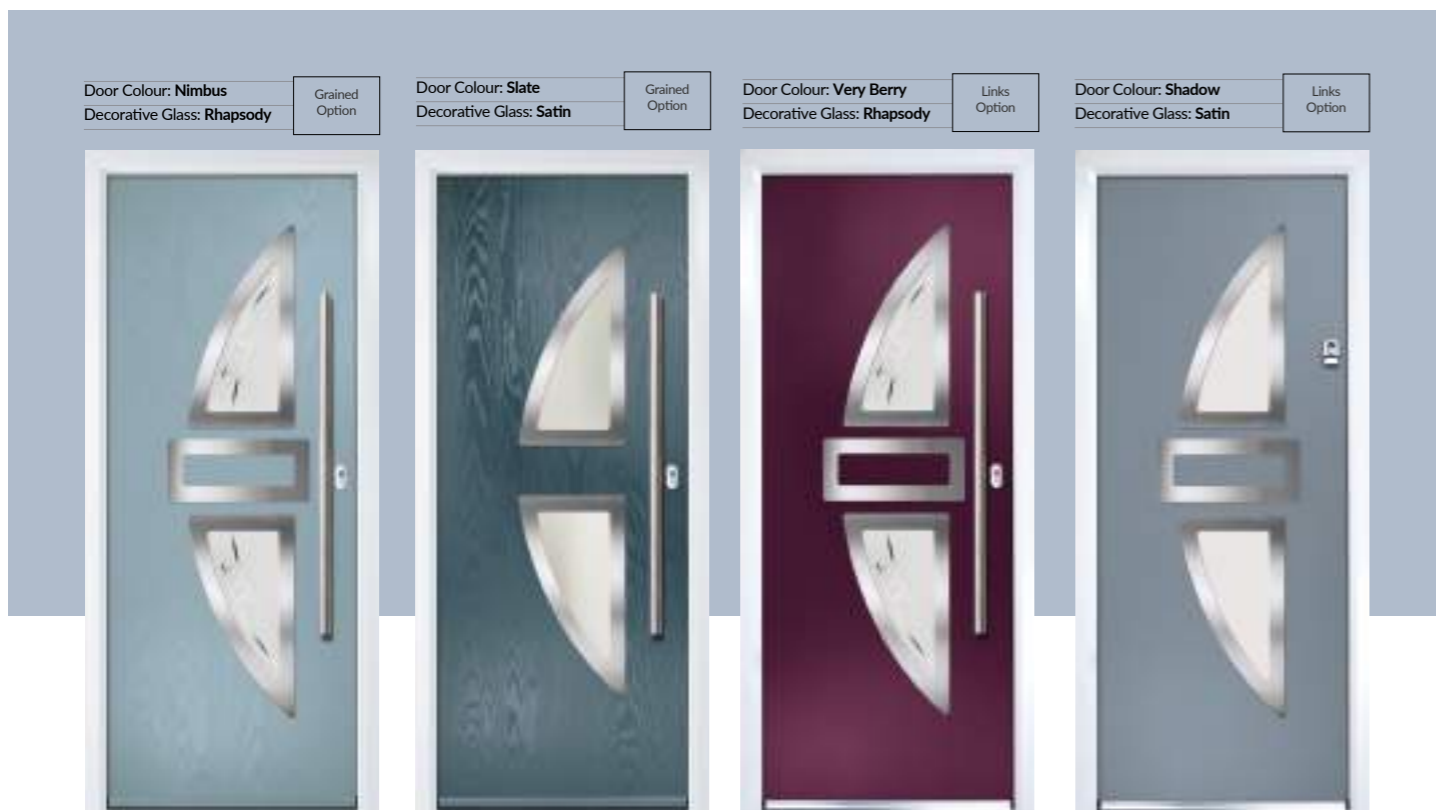
Door Colour: Irish Oak | Decorative Glass: Rhapsody



Caring for your new door
A few tips...

Your new door should keep you safe and secure for years to come. However with all products, and especially those that are exposed to the elements, we recommend that you carry out a care and maintenance routine.

- Door frames should be washed with warm soapy water, however stubborn stains can be removed using specialist uPVC cleaners and by following the manufacturers' guidelines.
- The door leaf should only be cleaned using warm water or non-aggressive composite door wipes. No solvent-based product or abrasives should be used as these will damage the surface of the skin.
- External glass should be cleaned with warm soapy water and cleaned with a proprietary glass cleaner.
- Hardware can be cleaned with a mild detergent and wiped clean.
- No harsh chemicals or abrasives should be used.
- The door should be maintained for your guarantee to apply. Hinges should be lubricated with engineering oil. Cylinders can be lubricated with Teflon-based products only, as other oils may cause degradation. If necessary, a small amount of lubricant can be applied to the moving parts such as letterplates, handles and knockers.



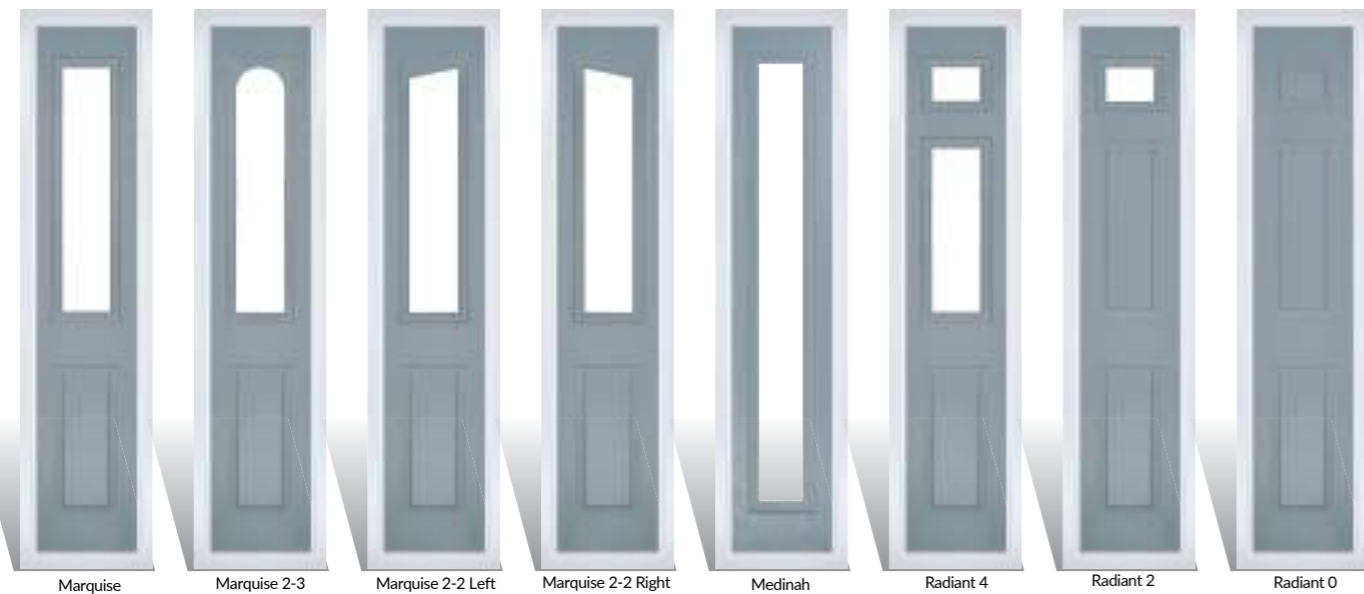
Space for a sidelight

If you have a hallway with a larger opening you may opt for a statement with the addition of some sidelights to your door.

Note: these are only available in a few of our door styles.



Door Style: **Craftsman 1** | Sidelight: **Medinah** | Door Colour: **Sage** | Decorative Glass: **Impression**



Marquise Marquise 2-3 Marquise 2-2 Left Marquise 2-2 Right Medinah Radiant 4 Radiant 2 Radiant 0

Door Style: **Marquise**
Door Colour: **Agate Grey**
Door Glass: **Tiffany**



Door Style: **Princess**
Door Colour: **Mulberry**
Door Glass: **Trio Diamond**



Door Style: **Gleneagles**
Door Colour: **Shadow**
Door Glass: **Louisiana**

Medinah sidelights use the FLiP Flat grained and Flat stipple cassettes only at this time.



Door Style: **Radiant 4**
Door Colour: **Wedgewood**
Door Glass: **Hathaway**

Choose your glass style

Decorative glass transforms doors and makes a personal statement. We offer a range of styles to suit all budgets and tastes to complement our traditional and contemporary doors perfectly.



4 Bevel

A simple glass design combining 4 clear bevelled glass squares and blackened caming that allows the light to flood in.



Artisan

Striking and flowing elliptical shapes form an array of crystal clear diamond bevels to create a dazzling effect. Glue chip surrounding textures provide a perfect contrasting finish.



Astoria

An Edwardian era design created using a combination of rich coloured glass of varying texture. Encapsulated inside a triple glazed unit to combine traditional leaded glass with 21st Century performance.



Athena

The Athena gracefully combines brilliant cut lines and a clean sandblast finish. The understated half glazed model is a great option as a simple glass design for a back door.



Belgravia

A Victorian inspired repeat design with a delicate star motif set into a diamond pattern. The combination of etched and clear glass works beautifully well on this traditional timeless design.



Birchwood

The purity of this linear range draws its inspiration from Frank Lloyd Wright. Hints of cubism come together with leading edge glass technology to create a wonderful multi-textured finish.



Bloomsbury

An impressive large bevel cluster for those looking for a real feature statement. The Bloomsbury bevels will refract light beautifully and its intricate detail is unsurpassed.



Carrington

Only available in our Marquise door, this simple design and uses traditional lead on a stippled backing glass. The diamond lead design sits proud to the outer pane when glazed into the door.



Diamonte

Offset diamond clear bevels of the Diamonte design provide a particularly modern finish. This contemporary design is finished to the highest standard with zinc and soldered joints.



Essence

A 1930's style decorative glass design combining a range of bold heritage colours and textured glass with blackened caming and traditional soldered joints.



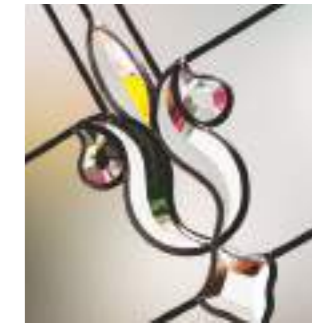
Grange

Our Bullion uses new techniques to create a very deep cut and impressive look. The circular bands create prisms of light and the design works very well in all styles of property.



Hathaway

Antique coloured glass is joined using a stunning black came and weld. All is encapsulated within the insulated unit for easy upkeep and to protect the design.



Indulgence Grey

The delicately shaped clear glass bevels glisten against the etched glass and create a look of understated and tasteful elegance.



Lanesborough

Genuine coloured Spectrum Glass with blackened cames combine to create this stunning leadlight design, reminiscent of the Victorian era. With Lanesborough, you can now have all the benefits of traditional leadlights, with the performance and thermal properties you would expect in your door. Available in 3 border colours: Amber, Blue or Green.



Numbers*

A custom house number as a combination of clear and etched glass, is available on a range of standard glass sizes.



Optimal

Simulated divided lights create the look of individual panes of glass, whilst maintaining the performance benefits of a single double glazed unit.



Onyx

Beautifully handcrafted, the geometry of the brilliant cut recurring diamond motif, complemented by etch effect glass, bring privacy and security to your home.



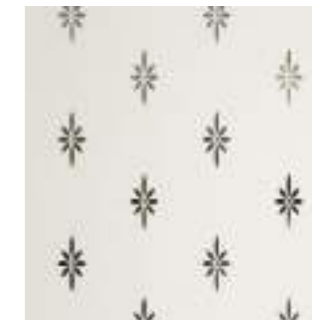
Prestige

An ageless classic design with crystal cut bevels surrounded by a stippled backing glass. The design incorporates clean zinc lines and traditional welded joints.



Renaissance

'Renaissance' epitomises ultimate luxury. An ornate clear bevel cluster will shimmer and refract natural light beautifully. This lush option is available with the choice of a clear or black crystal cut border.



Stardrop

Stardrop features delicate star drops in a sparse pattern giving a high level of obscurity through the etched texture of the glass.



Tiffany

The Tiffany is reminiscent of designs used in the Victorian period. It uses a combination of vibrant coloured glasses against a background of softly rippled glass, with blackened cames.



Tranquility Zinc

This extremely popular model combines multiple cut bevels and striking backing textures all encapsulated with the insulated glass unit.



Trio Diamonds

The finest quality of hand crafted decorative triple-glazing with a contemporary zinc finish. Luxury crystal cut bevels are sealed securely between 2 panes of safety glass to ensure good looks for many years to come.

CONTEMPORARY



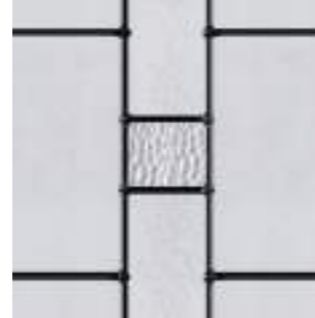
Artemis

Simple but extremely effective. The Artemis features an etched glass centre with a clear surrounding border. A strong option for both traditional and modern homes alike.



Aspen

This European style design is produced using high grade brushed stainless Inox elements, that are bonded to the centre panel of glass. This combination provides a unique contrast.



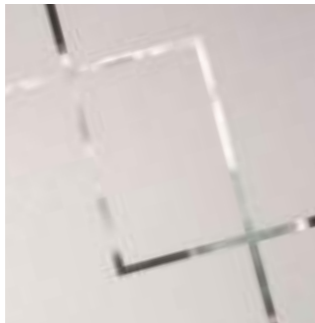
Aztec

A luxury triple glazed option, featuring modern black came with hammered and stipple backing glass. This crisp design offers very high levels of privacy and allows lots of light throughout any entrance.



Cubic

The concentric squares inside a band of sandblasted glass is a subtle take on our Vector design. The Difuso glass ensures high levels of privacy whilst maintaining light transmission.



Deco

Exclusively commissioned by glass artisans, Deco uses a sophisticated frosted backing glass coupled with clear dividing lines that create a simple, elegant and highly desirable contemporary design.



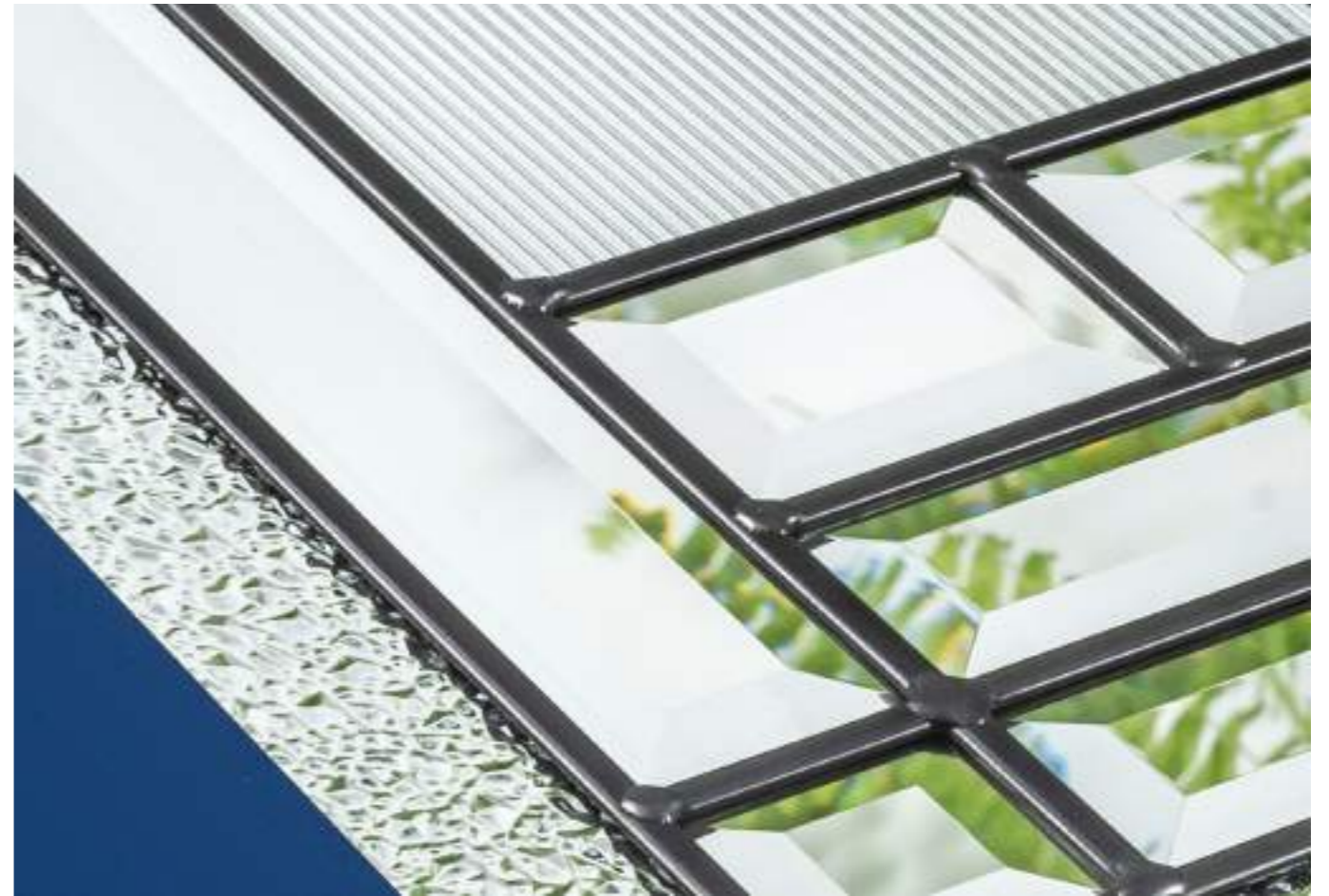
Halo

A stunningly simple design, Halo is created using hand cut glass centres, that are polished and bonded within a clear border. The contrast offers a beautiful combination.



Luxor

Intricate laser cut brushed stainless steel is inset within each triple glazed panel and located with zinc joining strips. A heavily embossed backing glass offers good levels of privacy.



Mercury

A modern clear design laced into an etched backing glass with feature clear glass bevels. Mercury has a chic look with the glass bevels sitting proud to the outer glass pane.



Milan

A modern yet understated, sleek decorative door glazing. A blend of deep cut glass bevels and 'reed' highly obscure backing glass combine perfectly to reveal an extremely alluring finish.



Panama

A sophisticated, contemporary design incorporating various glass textures with clear 'came' lines. Panama is a twist on lineal Art Deco period style.



Rhapsody

Rhapsody is designed to focus on European styling that suits the door that surrounds them. Contemporary, clean, simple etched designs that have proved very popular.

CONTEMPORARY



Bold Pink

Inspired by Pop Art and developed into a decorative glass design unlike anything else available by our design consultant Jeyda, Bold Pink makes the ultimate statement.



Etch Lines

The simplicity of the clear lines against the etched effect gives a truly contemporary, minimalist look that combines privacy and design.



Graphite

Graphite is modernity at its best. Using the latest weld-free coming technology in stunning matt black, it is a modern take on decorative glass which will complement any contemporary door.



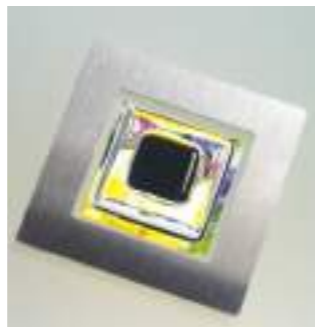
Synergy

A modern twist on a traditional technique, Synergy combines hand-cut textured glass pieces, contemporary fused glass elements and polished zinc coming.



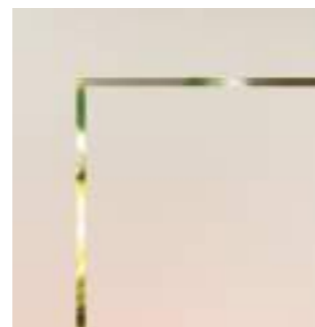
Tokyo

Tokyo is designed to focus on European styling that suits the door that surrounds them. Contemporary, clean, simple etched designs that have proved very popular.



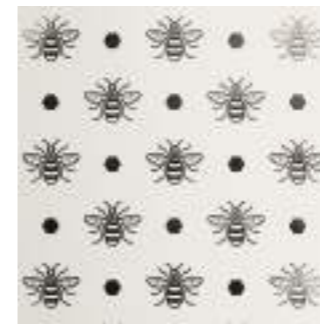
Vector

By combining Fusion glass tiles with small stainless steel elements and etched glass, Vector is a strikingly modern glazing option that is ideally suited for contemporary doorsets.



Victorian Border

Obscure delicately sandblasted glass combined with a crisp clear keyline gives Victorian Border a classical simplicity that is equally in place in contemporary and traditional doors.



Hive

Hive has always been an icon of hard work, but more recently, promotes the ideal of togetherness. Its roots have been based in Manchester for centuries – but can be seen across the UK as a symbol of nature.



Impression

Stunning black chrome coming combined with satin and grey bevelled glass pieces, Impression makes a striking statement encapsulated inside a double glazed unit for easy cleaning.



Kew

Kew combines intricate bevel work and soft water glass against a background of obscure etched glass. The central flower motif will make a stunning focal point for any door.



Lotus

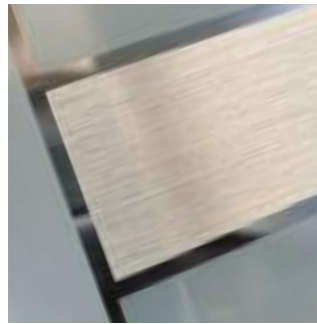
Using the 'weld-free' chrome finish aluminium comes, combined with bevelled glass pieces and etched Millennium glass, Lotus is a truly stunning yet simple design.

CONTEMPORARY



Louisiana

The complex bevelled design combined with stunning textured glass creates a design with undoubted kerb appeal and "Wow Factor".



Metallic

Metallic is a brand-new innovation that combines a striking etched backing design with ultra-modern brushed stainless steel effect inserts. Perfect for those seeking the very latest contemporary finish.



Metropolis

Metropolis is inspired by the Art Deco designs of the 1930's and, with its bold design and colourways, it looks equally at home in both traditional and more modern door settings.



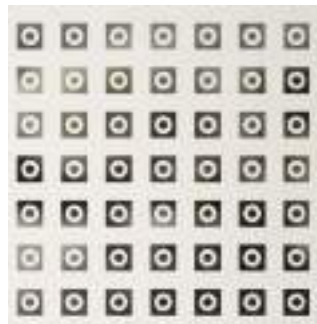
Peak

From the unique Jeyda design collection, Peak is a fabulously unique design with an array of colours and textures combined with fine black lines.



Quantum

Combining our soft acid etched Difuso glass with the deeper texture of the sandblasted design creates a modern, striking glass perfectly suited for contemporary doors.



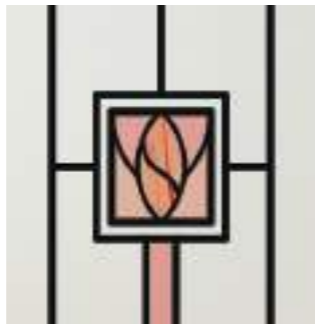
Quadratum

The etched glass squares with delicate clear circles inset in the pattern is a modern twist on the traditional etched glass style.



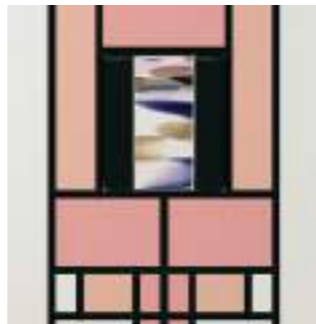
Skyline

A simplistic yet strikingly modern glass design, Skyline uses a combination of multi-width clear lines against a background of delicately sandblasted glass.



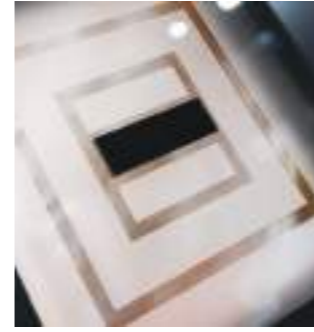
Soul Pink

The combination of delicate pink colours with varying levels of transparency, combine to create a modern design with a nod to the mid-century modern design style.



Spirit Pink

Bold colours and textures glass effects are combined with a beautiful, fused glass motif.



Space

Minimalist and stylish, Space is a modern geometric design of an etched glass design, offset with 3-dimensional black glass elements, encapsulated inside a triple glazed unit.



Tectronic

A truly contemporary design from our in-house designer Jeyda. The geometric shapes are combined with neutral greys and black glass colours to create a design unlike anything else on the market today.



Trinity

The multi-width lines of Difuso soft acid etched glass contrast beautifully with the deeper texture of the sandblasting to create a truly modern design.

Clear or Obscure Glass Options

The majority of our door styles are also available in a standard range of 4 carefully selected Low-E Laminated patterned glass options or Low-E Laminated clear glass.



Minster

Minster pays homage to historic hammered glass and is most suited to period homes or more traditional door styles.



Stippolyte

The timeless appeal of this stipple effect glass makes it one of our most popular options. The surface texture offers very high levels of obscurity and the design suits most door and house styles.



Cotswold

A more heavily textured pattern resembling water cascading over a surface. It is one of our most popular patterns and is especially suitable for doors that require higher levels of privacy.



Satin

Satin glass is an acid etched glass that offers high levels of privacy. It is a very neutral finish similar to sandblast and is ideal for use in both traditional and contemporary doors.

Glass options by door style

TRADITIONAL door style glass options	Marquise/2-2/2-3	Craftsman	Crown 1	Crown 3	Crown 5	Radiant 4/2	Trillion	Trillion Grid	Princess	Princess 4/9 Grid	Gleneagles	Gleneagles 4 grid	Solitaire 1-2	Solitaire 6	Solitaire 1	Solitaire 3/7	Solitaire 5	Solitaire 4/10	Solitaire 2	Merion	Merion Grid	
4 Bevel Square																						
Artemis	■	■	■	■		■			■		■		■	■	■	■	■	■	■	■	■	■
Artisan	■															■	■					
Aspen																						
Astoria	■																					
Athena	■								■													
Aztec							■															
Belgravia	■					■							■	■	■			■			■	
Birchwood	■		■	■		■					■		■			■	■	■	■	■		
Bloomsbury	■		■	■		■	■						■			■	■	■	■	■		
Bold Pink									■													
Carrington	■																					
Cubic	■					■							■	■	■	■	■	■				
Deco																						
Diamonte	■															■						
Essence		■																				
Etch Lines																						
Grange														■	■							
Graphite	■										■		■	■	■			■				
Halo																						
Hathaway		■	■	■		■							■									
Hive													■									
Impression	■	■	■	■		■			■		■		■			■	■	■	■	■		
Indulgence Grey											■											
Kew	■	■											■			■	■					
Lanesborough	■													■	■	■						
Lotus											■											
Louisiana	■	■				■			■		■		■	■	■	■	■	■	■		■	
Luxor	■															■	■					
Mercury	■					■										■	■					
Metallic														■	■							
Metropolis	■					■			■				■						■			
Milan	■		■	■		■							■					■	■			
Numbers			■	■					■											■		
Onyx											■					■	■					
Optimal					■			■			■											■
Panama		■																				
Peak			■																	■		
Prestige	■		■	■		■							■			■		■	■			
Quadratum																						
Quantum																						
Renaissance								■								■	■					
Rhapsody																						
Skyline																						
Soul Pink	■																					
Space														■	■							
Spirit Pink	■																					
Stardrop			■	■									■							■		
Synergy								■			■					■	■					
Tectronic	■					■							■					■				
Tiffany	■	■														■	■					
Tokyo																						
Tranquility Zinc	■	■	■	■			■						■	■	■	■	■	■	■	■		
Trinity														■	■	■	■	■	■			
Trio Diamond	■		■	■		■			■				■			■	■	■	■	■		
Vector																■						
Victorian Border	■	■	■	■		■	■		■		■		■	■	■			■	■	■		

CONTEMPORARY door style glass options	Augusta Long	Augusta	Oakmont & Copenhagen	Vilamoura	Squared	Inox Nice	Inox Lyon	Inox Munich	Inox Monaco	Inox Barcelona	Inox Paris/Blaritz
4 Bevel Square					■						
Artemis	■	■		■	■						
Artisan											
Aspen								■			
Astoria											
Athena	■										
Aztec											
Belgravia			■	■	■						
Birchwood				■							
Bloomsbury				■							
Bold Pink											
Carrington											
Cubic	■		■	■	■	■	■		■		
Deco	■	■									
Diamonte											
Essence											
Etch Lines	■	■									
Grange											
Graphite	■	■		■	■	■	■	■	■		
Halo											■
Hathaway											
Hive											
Impression	■	■		■							
Indulgence Grey											
Kew											
Lanesborough	■				■						
Lotus	■	■	■								
Louisiana	■			■	■						
Luxor	■	■									
Mercury	■			■		■	■		■		
Metallic	■	■	■		■						
Metropolis				■							
Milan				■							
Numbers	■	■									
Onyx											
Optimal											
Panama											
Peak											
Prestige				■							
Quadratum	■	■									
Quantum	■	■							■		
Renaissance											
Rhapsody											■
Skyline			■			■	■				
Soul Pink											
Space						■	■				
Spirit Pink											
Stardrop											
Synergy								■			
Tectronic	■		■	■							
Tiffany	■										
Tokyo											■
Tranquility Zinc				■	■						
Trinity	■				■	■	■				
Trio Diamond	■			■							
Vector						■					
Victorian Border	■	■	■	■	■						



Choose your hardware

Your furniture choices for your new door can really complement and enhance the look of your door. Whether you're looking to complete your traditional or contemporary door, you'll find the hardware that gives you the perfect finishing touch. You have 9 great colour options to choose from, supplied complete with a full 10 year mechanical guarantee and surface finish warranty.



Lever Handles



Pad Handles



Letterplates



Urn Knockers Available with or without Spyhole



Slimline Urn Knockers Available in all colours with or without Spyhole



Horsetail Knockers Available in all colours



Contemporary Knockers



Numerals

Available in all colours



Contemporary Pull Handles

Inline and offset pull handles available in a range of sizes from 400mm to 1800mm.

Fitted centrally to the door height on both sides of the door.

To suit AV3 and AV3 Heritage locks.

Escutcheon Range



SUPA™ Secure Pull High security police preferred specification

SUPA™ Standard Pull



SUPA™ Secure High security police preferred specification

SUPA™ Standard



Polished PVD Gold Stainless

Polished Stainless

Brushed Stainless

Fully suited hardware

The Sweet range has curve appeal with edgeless longlasting beauty as standard, whilst offering outstanding resilience and longevity.



Make your door unique

Handle options are lever or pad, numerals and letters, and a knocker in a great range of colours to create a unique focal point.

With a 20 year anti corrosion guarantee* your new door will look great for years to come.

*Product must be registered with manufacturer



Works with lever handles or slam locks.

Make your door SMART!

Upgrade your lock to Ultion Smart to control your door lock with your smartphone, your watch, by voice command or with a key.

Unlock on approach

You can set Ultion Smart to unlock as soon as you enter the unlock zone without even touching your phone.

Lock behind you

Never wonder if you locked the door again. You can set how long Ultion Smart stays unlocked for before securing the door again.

Send guest keys by phone

You can send a digital key or numerical code for use of the optional wireless key pad. These can be used as a timed or permanent access straight to a guest's phone by text or email.

Voice control

Operate via Alexa and Siri.

£2000 Security Guarantee

Ultion and Ultion Smart locks give the highest protection from the most common method of forced entry - lock snapping.

Registered locks are covered by the £2000 Security guarantee.

Activate your Ultion 5 year guarantee for free at www.ultion.co.uk

Wireless keypad

The wireless keypad option connects to Ultion Smart using bluetooth. You get all the convenience of a keypad without fitting a control panel to your front door.

Find out more at www.ultion-lock.co.uk/ultion-smart

THE PERFECT ENTRANCE FOR YOU AND YOUR HOME



Minimal maintenance.

No painting or warping, just a simple wipe down.

Much more secure.

Fitted with Ultion cylinder and achieving SBD (Secured by Design) standard.

A unique entrance.

Choose from a range of styles, colours and hardware.

Smart door option.

With Kubu and Ultion Smart you can keep track of your door status wherever you are.

All details are correct at the time of going to print. The Glazerite UK Group Ltd reserve the right to amend without prior notice. Do not copy or use without permission of The Glazerite UK Group Ltd.

Copyright 2023. The Glazerite UK Group Ltd. Version: GVHC/02/23

